

Page 1: Euro Dollar & Dollar Yen ST = 1-2 weeks, MT = 3-4 weeks *** = strong conviction, ** = medium conviction, * = low conviction
 Page 2 : Sterling Dollar

EUR/USD intraday ** ↗

Strategy	Entry	Stop	1st target	2nd target
LONG	1.2965	1.2955	1.3045	1.3115

Pivot: 1.2955.

Our Preference: LONG positions above 1.2955 with 1.3045 & 1.3115 as next targets.

Alternative scenario: The downside penetration of 1.2955 will call for a slide towards 1.2915 & 1.289.

Comment: the pair has broken above the 1.2955 intermediary resistance & is now expected to rise towards 1.3115.

Trend: ST Ltd Upside; MT Bearish

Key levels:	Comment:
-------------	----------

- 1.317** Fib projection
- 1.3115** Fib projection
- 1.3045* Fib projection
- 1.299 **Last**
- 1.2955*** Intraday pivot point
- 1.2915* Fib retracement (50%)
- 1.289** ST bullish Channel Support



USD/JPY intraday ** ↘

Strategy	Entry	Stop	1st target	2nd target
SHORT	87.90	88.00	87.45	87.20

Pivot: 88.00.

Our Preference: SHORT positions @ 87.9 with 87.45 & 87.2 as next targets.

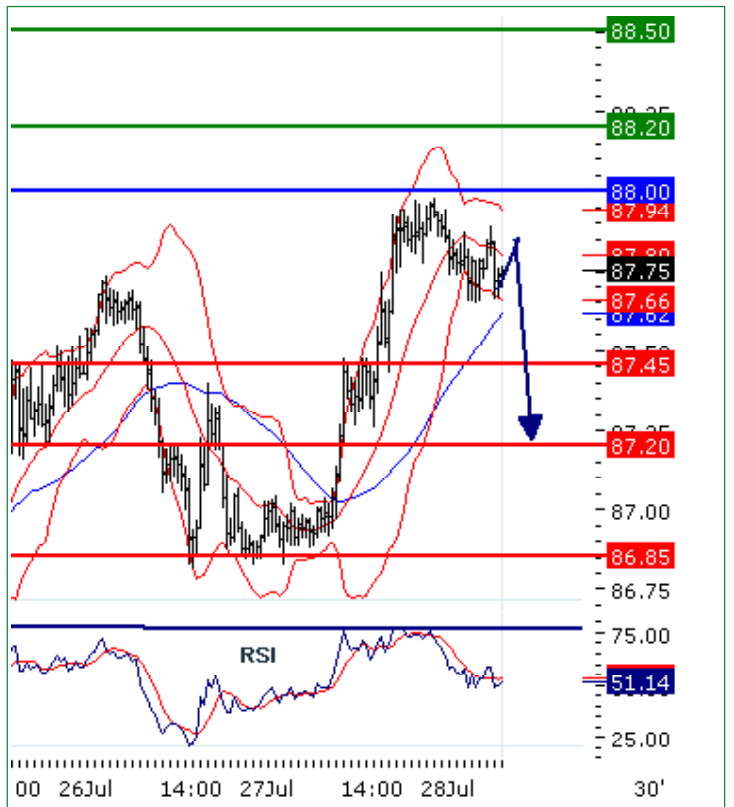
Alternative scenario: The upside breakout of 88 will open the way to 88.2 & 88.5.

Comment: the RSI has struck against a major resistance around 70% and is reversing down.

Trend: ST Ltd Downside; MT Range

Key levels:	Comment:
-------------	----------

- 88.5*** Intraday resistance
- 88.2* Intraday resistance
- 88*** Intraday pivot point
- 87.72 **Last**
- 87.45** Intraday support
- 87.2** Intraday support
- 86.85** Intraday support



GBP/USD intraday *



Strategy	Entry	Stop	1st target	2nd target
LONG	1.5540	1.5530	1.5615	1.5680

Pivot: 1.5530.

Our Preference: LONG positions @ 1.554 with 1.5615 & 1.568 in sight.

Alternative scenario: The downside penetration of 1.553 will call for a slide towards 1.5445 & 1.538.

Comment: the pair is supported by an intraday rising trend line & technical indicators are on the upside.

Trend: ST Ltd Upside; MT Range

Key levels:	Comment:
-------------	----------

- 1.572** Fib projection
- 1.568** Fib projection
- 1.5615* Fib projection
- 1.558 **Last**
- 1.553*** Intraday pivot point
- 1.5445** Intraday support
- 1.538** Fib retracement (61.8%)



Copyright TRADING CENTRAL

The information contained in this publication is not intended as an offer or solicitation for the purchase or sale of any financial instrument. Any opinion offered herein reflects TRADING Central current judgment and may change without notice. Users acknowledge and agree to the fact that, by its very nature, any investment in shares, stock options and similar and assimilated products is characterised by a certain degree of uncertainty and that, consequently, any investment of this nature involves risks for which the user is solely responsible and liable.

Services in the U.S. are offered through TRADING Central Americas, Inc.

TRADING Central is not registered in France as an Investment Services Provider but complies with the following rules and directives, including:

- General Regulation Handbook of the AMF, Book III, Title III, Chapter VII "Investment Analysts Not Associated with an Investment Services Provider"
- EU Commission Directive 2006/73 dated 10 August 2006, Articles 24 and 25
- EU Commission Directive 2004/39 dated 21 April 2004
- EU Commission Directive 2003/125 dated 22 December 2003

