

## FapTurbo.com Presents



### Important note

Before reading this document and using Fapturbo Ichimoku please make sure that you have carefully read and learned the original Fapturbo guide!! It has all the information you need to get started with Fapturbo trading robot.

The current document is short and related only to Fapturbo Ichimoku. It assumes that you already have all the knowledge you received from original Fapturbo guide.

If you have not read the guide please close the current document and go to <http://fapturbo.com/fapturboguide.pdf>

### FapTurbo Ichimoku

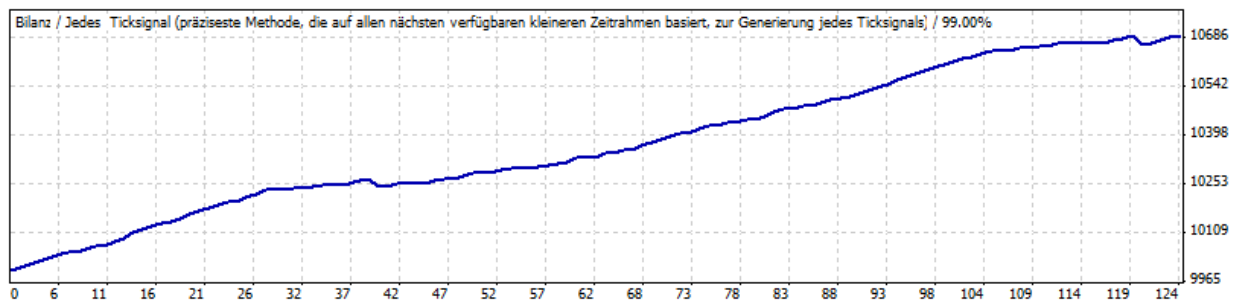
Fapturbo Ichimoku is a new powerful bonus version of FapTurbo scalper. It is available exclusive for Fapturbo clients only.

Fapturbo Ichimoku combines the power of the new scalping algorithm with reduced Stop Loss values and improved filters to make it really stable and safe.

For example the Stop Loss value in the original version is around 70-110 pips while in a new Ichimoku it is only 20-40 pips making it really easy to cover! Moreover we could achieve a

perfect 99% backtest to prove its performance on history. Normally EA vendors never achieve accuracy above 90%.

### 99% Accuracy Backtest:



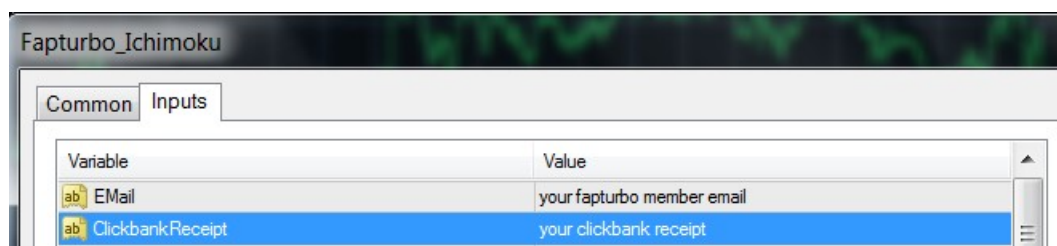
Fapturbo Ichimoku allows you to choose between Safe and Aggressive settings according to your trading behavior!

### How to install Fapturbo Ichimoku

1. Download the fapturbo ichimoku files from the FapturboIchimoku ZIP Package (can be found in member area download section)
2. Then place **Fapturbo\_Ichimoku.ex4** file into the /experts folder and **FaptAuth.dll** file into the libraries folder in your Metatrader directories. The exact filenames may vary from those shown above due to new versions being released.
3. Restart MT4

### How to activate Fapturbo Ichimoku

1. Attach EA to the chart and input your fapturbo member email and your purchase clickbank receipt into the settings:



2. If you are trading Demo – no further action is required because you can trade unlimited amount of demo accounts with it. However if you are trading LIVE you need to go to fapturbo member area and scroll down and input your LIVE account number there:

## Real Money Account Activation

Insert your Live Account Number:

Insert your Live account Expert ID:

**Activate my Live account**

## Live Account Activation (for FapTurbo Ichimoku)

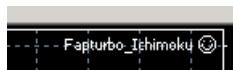
Insert your Live Account Number:

**Activate my Live account**

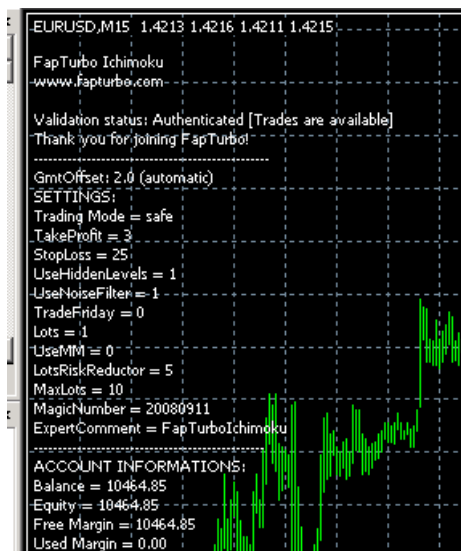
### Note:

1. You can activate 1 live account for Fapturbo Ichimoku. It can be same account as you have for main fapturbo or different one. If you need to reset the account please contact the support.

### When properly installed you see:



in the right corner and the chart info in the left corner:



### Possible problems with activation:

- **Wrong Email/CB receipt: Authentication Failed [Wrong E-Mail or ClickbankReceipt]**

This means you input invalid member email or clickbank receipt. Please check your welcome email from clickbank to input the correct clickbank receipt. It usually looks like this: 78R7NENM Do not include any # or spaces!

Use only email that you use to login to fapturbo member area!

- **No Live acc# or wrong one: Authentication Failed [Invalid Real Money Account Number]**

This means you forgot to input and activate your live account in fapturbo member area.

- **Wrong currency pair: You have dropped the robot onto the Wrong Pair or Symbol**

Fapturbo Ichimoku works only on EURUSD M15, EURCHF M15, GBPCHF M15, EURGBP M15 and USDCHF M15. There is no USDCAD pair here.

- **Refund -> BANNED: You have refunded your FapTurbo purchase!!**

Please contact our support in order to purchase a new license or use the following link:

<http://fapturbo.com/secureregistration.php>

- **No Live Acc#: Authentication Failed - You have not yet registered your Live Account#.**

Kindly go to fapturbo member area, input and activate your live account

## Which pairs to trade?

Fapturbo Ichimoku works only on EURUSD M15, GBPUSD M15, EURCHF M15, GBPCHF M15, EURGBP M15 and USDCHF M15. There is no USDCAD pair here. Best pair is EURCHF M15. If you trade GBPCHF make sure you get low spreads for it! Use [lamfx.com](http://lamfx.com) or [Fibo group](http://fibo.group) with low spreads.

## Fapturbo Ichimoku Settings

Most settings are the same like in original fapturbo so we don't cover them here again. Please refer to main fapturbo guide for setting explanation: <http://fapturbo.com/fapturboguide.pdf>

**New settings:**

Trade_Options	
DownloadBestSettings	true
AggressiveSettings	false
TakeProfit	3
StopLoss	35
StartWorkTimeHour	23
EndWorkTimeHour	0
TradeFriday	false

- **DownloadBestSettings** = true. This is a brand new feature that did not exist in the old Fapturbo. If true then EA will download fresh up-to-date settings from our fapturbo server. This is the best option to use. This way EA always stays up to date and you don't have to update it manually like old fapturbo! If you turn it to False then EA will use the static values of TP, SL and Start and End time from the settings below/
- TakeProfit, StopLoss, Start and End Work Time are used ONLY if **DownloadBestSettings** = false.

## Frequently Asked Questions about Fapturbo Ichimoku

### What does "Ichimoku" mean? Such a strange word.

Ichimoku is a powerful forex indicator built inside MT4. Ichimoku Kinko Hyo usually just called ichimoku is a technical analysis method that builds on candlestick charting to improve the accuracy of forecasted price moves. It was developed in the late 1930s by Goichi Hosoda, a Japanese journalist who used to be known as Ichimoku Sanjin, which can be translated as "What a man in the mountain sees". He spent thirty years perfecting the technique before releasing his findings to the general public in the late 1960s. More: [http://en.wikipedia.org/wiki/Ichimoku\\_Kink%C5%8D\\_Hy%C5%8D](http://en.wikipedia.org/wiki/Ichimoku_Kink%C5%8D_Hy%C5%8D)

### Is Fapturbo Ichimoku a replacement for old fapturbo

No, you can use them both in combination. Fapturbo Ichimoku is a new version of Fapturbo Scalper but it does not have long-term strategy that old fapturbo has.

### How did you obtain amazing 99% accuracy on backtest? I can only get 90%!

It's not possible for a small trader to obtain 99% accuracy. We got the tick price quotes directly from the bookies and used special software to integrate them into MT4. That's why our backtest is so accurate. Normal trader can obtain only M1 data that's why the accuracy is not so high and limited to 90%.

### What's the difference between Safe and Aggressive settings?

The aggressive settings have longer trading interval – that's why you will receive much more trades and more profit but remember the higher the gains the higher the risk! The safe settings are good for conservative trader.

### Which brokers are good for Fapturbo ichimoku?

Use [lamfx.com](http://lamfx.com) or [Fibo group](http://Fibo_group) with low spreads.

**Which pairs does it trade?**

Fapturbo Ichimoku works only on EURUSD M15, GBPUSD M15, EURCHF M15, GBPCHF M15, EURGBP M15 and USDCHF M15. There is no USDCAD pair here.

**Can I use Fapturbo Ichimoku on different live account?**

Yes, you can use it on the same account as old fapturbo or another account. Remember you have only 1 live account per license per EA. Unlimited demo accounts.

**Do I need activation ID for Ichimoku ea?**

No, we simplified activation process. You don't need Activation ID for Ichimoku EA. Only your clickbank receipt and member email!

**Does Ichimoku fapturbo expire every 3 months?**

No, Ichimoku EA never expires because it gets fresh settings directly from our server and no manual update is required

**I made a refund and EA stopped working?? What to do??**

Please contact our support in order to purchase a new license or use the following link:

<http://fapturbo.com/secureregistration.php>

**I downloaded pirated copy of Fapturbo Ichimoku .**

This is a common mistake of newbie traders. The pirated copy does not connect to our fapturbo server and does not receive the proper settings. This way your account is at risk because you cheated yourself ☺ You are using wrong settings and will start getting losses. Make sure you only use a legal copy that connects to our server to receive proper settings for profitable trading.

**The EA is not activating and says "initialing..."**

That means today is Weekend and Forex is closed. Wait till Monday when market is open again! Also make sure that DLL calls are enabled in EA settings.